



NON-RECYCABLE WASTE




WASTE PAPER & CARDBOARD (PACKAGINGS)




ORGANIC WASTE




PLASTIC PACKAGINGS




METAL PACKAGINGS




CLEAR GLASS; COLOURED GLASS





PLASTIC PACKAGINGS



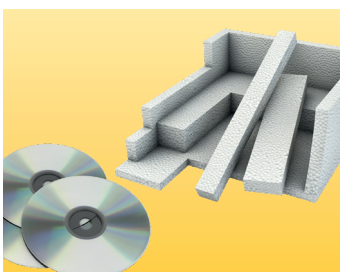
CARDBOARD (PACKAGINGS)



METAL PACKAGINGS



CLEAR GLASS; COLOURED GLASS



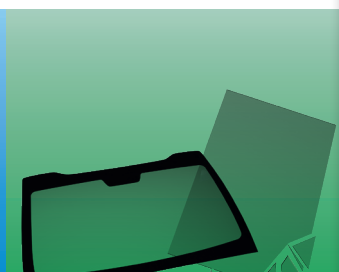
STYROFOAM, CDs, PVC



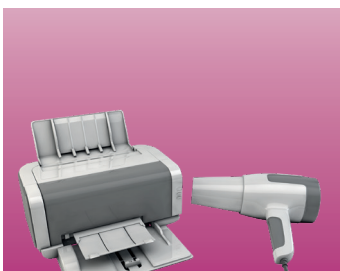
WASTE PAPER



METAL WASTE



FLAT GLASS



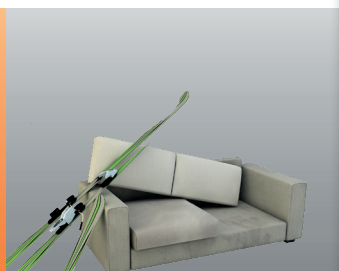
ELECTRICAL APPLIANCES



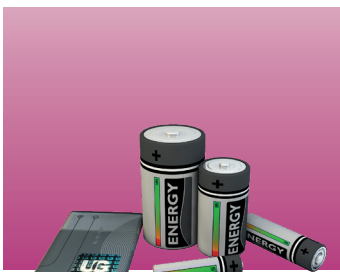
WOODEN PACKAGES



PROBLEM SUBSTANCES



BULKY WASTE



BATTERIES



WASTE WOOD



HAZARDOUS WASTE



DEMOLITION AND CONSTRUCTION WASTE



ASZ Alkoven/Wilhering

Gewerbestraße 2 - 4072 Alkoven

Tel.: +43 7274 7944

E-Mail: asz-alkoven-wilhering@umweltprofis.at

ÖFFNUNGSZEITEN

Montag 8.30 – 12.00 und 13.00 – 18.00 Uhr

Mittwoch 12.30 – 18.00 Uhr

Freitag 8.30 – 12.00 und 13.00 – 18.00 Uhr

Samstag 8.00 – 12.30 Uhr

ASZ Eferding

Karl-Schachinger-Straße 5 - 4070 Eferding

Tel.: +43 7272 6633

E-Mail: asz-eferding@umweltprofis.at

ÖFFNUNGSZEITEN

Dienstag 8.00 – 12.00 und 13.00 – 18.00 Uhr

Mittwoch 9.00 – 12.00 und 13.00 – 18.00 Uhr

Freitag 8.00 – 12.00 und 13.00 – 18.00 Uhr

Samstag 8.00 – 12.30 Uhr

ASZ Hartkirchen

Schaunbergstraße 27 - 4081 Hartkirchen

Tel.: +43 7273 6730

E-Mail: asz-hartkirchen@umweltprofis.at

ÖFFNUNGSZEITEN

Dienstag 9.30 – 12.00 und 13.00 – 18.00 Uhr

Freitag 8.30 – 12.00 und 13.00 – 18.00 Uhr

Samstag 8.00 – 12.30 Uhr

PERSONAL ASSISTANCE AND INFORMATION SIGNS IN EVERY ASZ!

